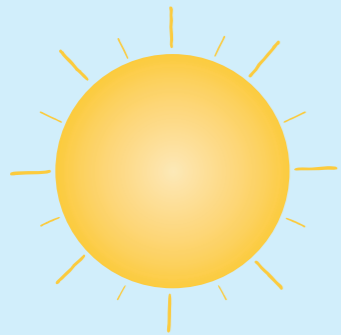


Neighboring States Outshine Kansas

Surrounding states cast a shadow over Kansas' support for working families

You might've heard from lawmakers about how generous Kansas' Earned Income Tax Credit (EITC) is. Facts are, Kansas' EITC is about the last remaining tax credit available to working families. Many of the other working family tax credits Kansas had were eliminated in 2012 to pay for tax cuts that primarily benefit wealthy Kansans. At the same time, our neighbors have many of these credits while working Kansans now have the highest sales tax in the region (including food). For working families trying to make ends meet, the state EITC is it.

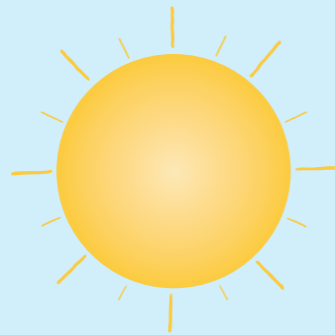
NEBRASKA



Lower overall sales tax
0% sales tax on food

Child & Dependent Care Credit

COLORADO



Lower overall sales tax
0% sales tax on food

Child & Dependent Care Credit

Property Tax Circuit Breaker

KANSAS



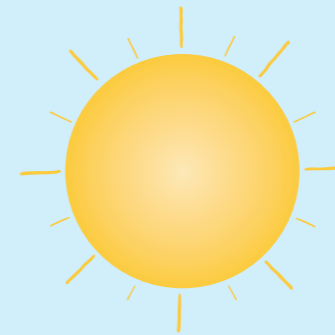
Higher sales tax (with food): 6.5%

~~Child & Dependent Care Credit~~

~~Refundable Grocery Credit~~

~~Property Tax Circuit Breaker~~

OKLAHOMA



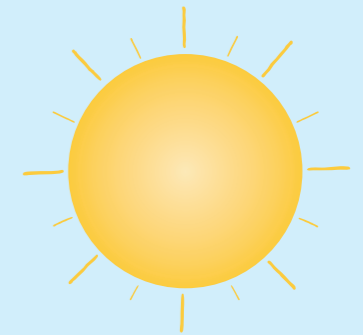
Lower overall sales tax
Food sales tax: 4.5%

Refundable Grocery Tax Credit

Child & Dependent Care Credit

Property Tax Circuit Breaker

MISSOURI



Lower overall sales tax
Food sales tax: 1.225%

Property Tax Circuit Breaker

— Lost credits in 2012 due to tax cut policies in Kansas

Source: Tax Credits for Working Families, State Resources (www.taxcreditsforworkingfamilies.org/state-resources/)

www.realprosperityks.com

